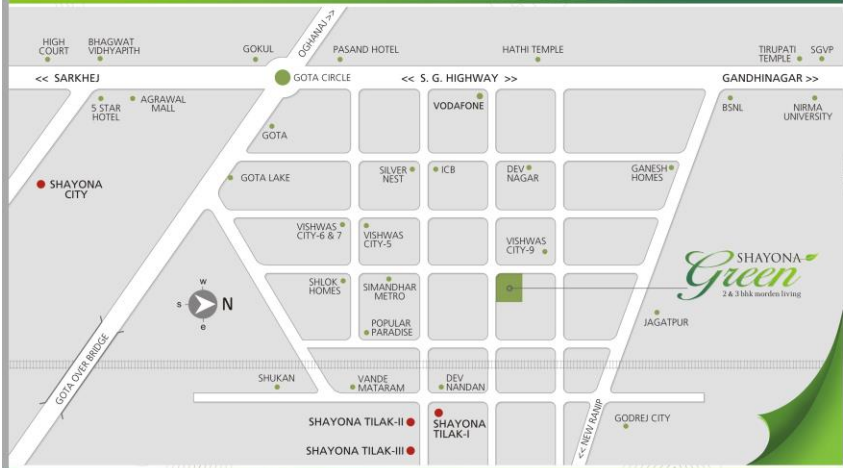




Location map



Living *beyond* the luxury style...



Developers : **narayan** DEVELOPERS

Site Address :
Shayona Green, B/H. Vodafone Tower,
S.G. Highway, T.P.-32, Gota, Ahmedabad-382481
Mo. 9879089409, 9227489409, 9925221582
e-mail : shayonagreen@gmail.com

Architect : **M. S. Associates**
Ahmedabad

Structure : **Ketav Joshi**
Ahmedabad



Approved By :  MahaNagarPalika
No. 1273/2002/14143/07/2012

SHAYONA
Green
2 & 3 bhk morden living



Living *beyond* the luxury style...

2 & 3 bhk morden living

Be it the way you reside, do business, dine out, play, entertain or shop, you will find Shayona Greens with its townships, apartments, office complexes, shopping malls, restaurants & food courts, 5 star hotels & movie halls, helps you live life in a better way.

SHAYONA
Green
2 & 3 bhk morden living






Salient Features :

- Earthquake resistant structure design
- Separate attractive security cabin with common gates
- Well developed Entrance Foyer.
- 24 hour water supply
- Underground and overhead water tank with automatic water supply system
- Common bore well with submersible pump
- A shopping complex, school & temple are near by our site
- A pollution free & pleasant atmosphere
- A well developed landscaped common garden space with children park
- Senior citizen sitting
- Indoor games & office
- Excellent wind & sun light oriented design flats with 'vastu' in mind.
- Provision for split AC in all bedrooms & drawing room
- Professionally done anti termite treatment
- 24 hours security



SHOPS & PARKING FLOOR PLAN





2 & 3 bhk morden living

Living *beyond* the luxury style...

TYPICAL FLOOR PLAN



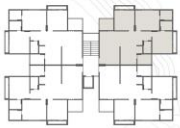
18.00 MT. WIDE ROAD

18.00 MT. WIDE ROAD



BLOCK - A, B, C & D

3 bhk unit floor plan



BLOCK - E

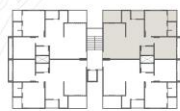
3 bhk unit floor plan





Specifications

- Structure :** Earth quake resistance R.C.C. frame structure.
- Plaster :** Internal single mala plaster with cement base wight putty finish & external sand face plaster with 100% acrylic waterproof paint.
- Flooring :** Vitrified tiles in all area.
- Kitchen :** Mirror polished granite platform with dedo of designer tiles up to lintel level with S.S. sink.
- Door :** Decorative main entrance door with wooden frame & all other doors with wooden frame with flush door shutters with S.S. fittings.
- Windows :** Alluminum section sliding windows with full glass with marble frames.
- Toilets :** Lintel level height glazed tiles dado in all toilets with good sanitary ware & C.P. fittings. Geyser point in all attach toilets.
- Electrification :** Concealed copper wiring with sufficient point T.V. & telephone in drawing room.
- Road & Pathways :** R.C.C. road with street lights / hard pavers block. Hollow plinth parking in kota stone & free parking for members.
- Entrance gate :** Security cabin with professional security service.
- Roof :** Brick-bat on concrete for thermal insulation & china mosaic flooring.



2 bhk unit floor plan

- Terms & Conditions :**
- Maintenance deposit shall be paid separately by all members.
 - G.E.B. / TORRENT POWER, A.M.C., LEGAL charges shall be borne by members.
 - Stamp duty & document charges shall be borne by the members.
 - All right reserve to developers for any changes.
 - External elevation can not be changed.
 - Internal changes shall be done with prior discussion and will be charged with 100% advanced payment.
 - This brochure is not a part of legal document, it is only for the easy display of the project.
 - Service tax & any other government tax if applicable will be borne by the members.